

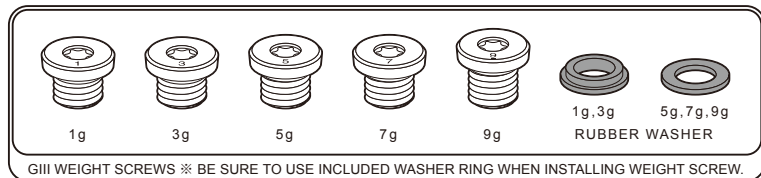
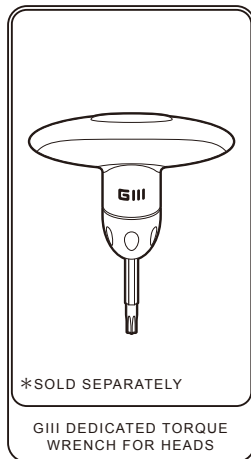
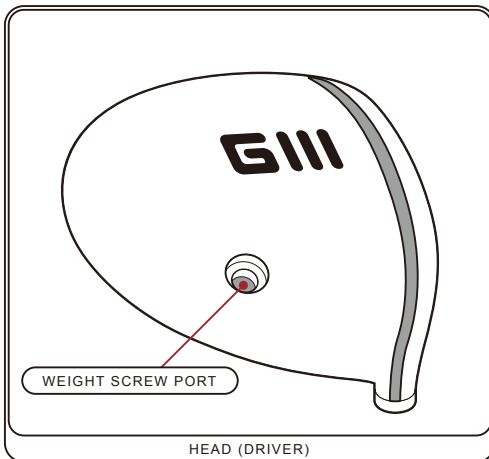
DAIWA GIII

GIII TRAJECTORY CONTROL SYSTEM - USER MANUAL -

◆INTRODUCTION◆

THANK YOU FOR PURCHASING OUR PRODUCT. THE GIII TRAJECTORY CONTROL SYSTEM (GTCS) ALLOWS PLAYERS TO FINE TUNE THEIR GIII CLUB TO MATCH THEIR SWING. THIS IN TURN PROVIDES MORE DISTANCE AND BETTER ACCURACY. PLEASE READ THIS MANUAL CAREFULLY ON HOW TO PROPERLY ADJUST YOUR CLUB AND TO AVOID IMPROPER INSTALLATION. PLEASE READ THE GOLF CLUB INSTRUCTION MANUAL FOR INFORMATION ON HOW TO CARE FOR YOUR CLUB.

PARTS LIST



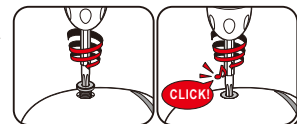
HOW TO CHANGE THE WEIGHT SCREWS

◆ REMOVING A WEIGHT SCREW ◆

INSERT THE DEDICATED TORQUE WRENCH INTO THE HOLE OF THE SCREW. TURN THE SCREW COUNTER CLOCKWISE UNTIL LOOSE THEN REMOVE THE SCREW FROM THE WEIGHT PORT.

◆ INSTALLING A WEIGHT SCREW ◆

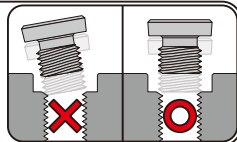
INSERT THE SCREW INTO THE WEIGHT PORT AND TURN THE SCREW CLOCKWISE USING THE DEDICATED TORQUE WRENCH. ROTATE THE SCREW FIRMLY UNTIL YOU HEAR THE TORQUE WRENCH CLICK INDICATING THAT THE WEIGHT SCREW HAS BEEN FULLY INSTALLED. THE WEIGHT SCREWS ARE DESIGNED TO BE TIGHTENED WITH A SPECIFIC AMOUNT OF TORQUE SO PLEASE ENSURE TO FOLLOW THESE INSTRUCTIONS.



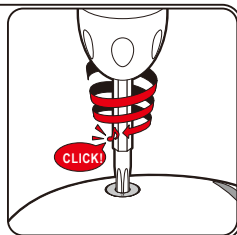
⚠️ AVOID IMPROPER INSTALLATION

PLEASE NOTE THE FOLLOWING PRECAUTIONS TO AVOID IMPROPER INSTALLATION AND TO PREVENT POSSIBLE DAMAGE.

DURING INSTALLATION, PLEASE ENSURE THAT THE THREADS OF THE WEIGHT SCREWS AND THE GROOVES OF THE WEIGHT SCREW PORT ARE ALIGNED PROPERLY. IF THEY ARE NOT ALIGNED STRAIGHT, DAMAGE MAY OCCUR TO THE THREADS AND/OR GROOVES RESULTING IN NON REMOVAL OF THE SCREW.

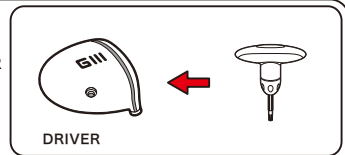


DURING INSTALLATION AND REMOVAL, PLEASE ENSURE THAT THE TIP OF THE WRENCH IS COMPLETELY INSERTED IN THE HEX (STAR) HOLE IN THE WEIGHT SCREW. FIRMLY SUPPORT THE HEAD AND WRENCH AND ENSURE THAT THE WRENCH AND HOLE ARE IN A STRAIGHT LINE. IF NOT ALIGNED STRAIGHT THE HOLE OF THE SCREW COULD BECOME DAMAGED MAKING IT DIFFICULT TO REMOVE OR INSTALL THE SCREWS IN THE FUTURE. DURING INSTALLATION ONCE THE TORQUE WRENCH MAKES A CLICKING SOUND IT MEANS THAT THE SCREW HAS BEEN FULLY INSTALLED AND YOU MAY REMOVE THE WRENCH.



CAUTION

ONLY USE THE GIII DEDICATED TORQUE WRENCH AS IT IS SPECIFICALLY DESIGNED FOR A PERFECT FIT, PROVIDING THE PROPER AMOUNT OF TORQUE NEEDED TO INSTALL A SCREW. IMPROPER INSTALLATION CAN RESULT IN SUB-PAR PERFORMANCE AND POSSIBLE DAMAGE TO YOUR CLUB.



CHECK THE CLUB HEAD EACH TIME BEFORE PLAYING OR PRACTICING TO ENSURE THE SCREWS ARE PROPERLY INSTALLED. IF THE WEIGHT SCREWS ARE NOT PROPERLY INSTALLED INTO THE WEIGHT PORTS, DO NOT USE THE CLUB FOR PLAY OR PRACTICE AS THE FOLLOWING SITUATIONS MAY OCCUR:

- (1) DIRT, DUST, MOISTURE, FOREIGN OBJECTS MAY GET INTO THE WEIGHT PORT. THESE MAY DAMAGE THE SCREW PREVENTING INSTALLATION. IN SOME CASES DAMAGE MAY OCCUR INSIDE THE CLUB HEAD OR HOSEL RESULTING IN NEGATIVE PERFORMANCE. IF THE WEIGHT PORT BECOMES DIRTY PLEASE CLEAN WITH A BRUSH BEFORE INSTALLING WEIGHTS.
- (2) IF THE WEIGHTS ARE NOT PROPERLY ATTACHED, THEY MAY COME OFF DURING THE SWING RESULTING IN UNWANTED ACCIDENTS.

⚠️ STORAGE AND CLEANING

CAUTION

- (1) ONLY REMOVE THE SCREW WHEN MAKING ADJUSTMENTS TO THE TRAJECTORY. OTHERWISE ALWAYS KEEP SCREWS FITTED TO PREVENT FOREIGN MATTER FROM ENTERING THE WEIGHT SCREW PORTS.
- (2) WHILE CLEANING THE CLUB HEAD, BE CAREFUL TO NOT LET ANY MOISTURE OR FLUID INTO THE WEIGHT SCREW PORTS. ALL SCREWS SHOULD BE PROPERLY FITTED WHILE CLEANING THE CLUB HEAD.
- (3) WHILE REMOVING AND INSTALLING WEIGHT SCREWS, KEEP THEM IN A CLEAN PLACE TO PREVENT THEM FROM GETTING DIRTY. A DIRTY SCREW CAN RESULT IN CLOGGED SCREW THREADS OR UNWANTED OBJECTS INSIDE THE HEAD. WIPE OFF ANY WET OR DIRTY SCREWS WITH A CLEAN SOFT CLOTH.
- (4) IF FOREIGN MATTER DOES GET INSIDE THE HEAD, TILT THE HEAD SO THE SCREW HOLES FACE DOWN AND CLEAN WITH A BRUSH OR SOFT CLOTH.
- (5) DO NOT USE ANY LUBRICANTS OR OILS ON THE THREADS OF THE WEIGHT SCREWS. NO LUBRICATION IS REQUIRED.
- (6) THE THREADS OF THE WEIGHT AS WELL AS THE WEIGHT ITSELF SHOULD NEVER BE MODIFIED IN ANY WAY. OTHERWISE PROPER INSTALLATION OF THE SCREWS MAY BE IMPEDED. MODIFYING THE SCREWS MAY ALSO RESULT IN THEM COMING LOOSE DURING A SWING RISKING INJURY TO OTHERS.
- (7) DO NOT FORCEFULLY REMOVE THE ATTACHED RUBBER WASHER FROM THE SCREW.

⚠️ GOLF RULES

CAUTION

THE FOLLOWING RULES APPLY TO GIII CONFORMING MODELS ONLY.

- (1) GIII CONFORMING DRIVERS CONFORM TO USGA AND R&A RULES, HOWEVER CHANGING THE WEIGHTS DURING THE ROUND IS CONSIDERED A BREACH OF RULES ACCORDING TO ARTICLE 4-2a STATING THAT CLUB PERFORMANCE SHOULD NOT BE INTENTIONALLY CHANGED DURING THE ROUND.
- (2) A CLUB HEAD WITH AN OPEN HOLE IS CONSIDERED A BREACH OF USGA AND R&A RULES.

SUPPLEMENTARY PROVISIONAL ARTICLE II 4a STATES: THE CLUB HEAD MUST BE GENERALLY PLAIN IN SHAPE. ALL PARTS MUST BE RIGID, STRUCTURAL IN NATURE AND FUNCTIONAL. WHILE IT IS DIFFICULT TO DEFINE ACCURATELY WHAT A PLAIN SHAPE IS, THE FOLLOWING IS AN EXAMPLE OF WHAT IS NOT ALLOWED IN THE RULES a) WOODS CONTAINS A HOLE(S) THROUGH THE HEAD.

GLOBERIDE, INC.
203-8511 JAPAN, TOKYO,
HIGASHIKURUME, MAESAWA 3-14-16